



Ongar Road, Abridge, RM4

BUTLER & STAG



A smart and well-presented two bedroom apartment, located on the first floor of a modern purpose built block.



Leasehold

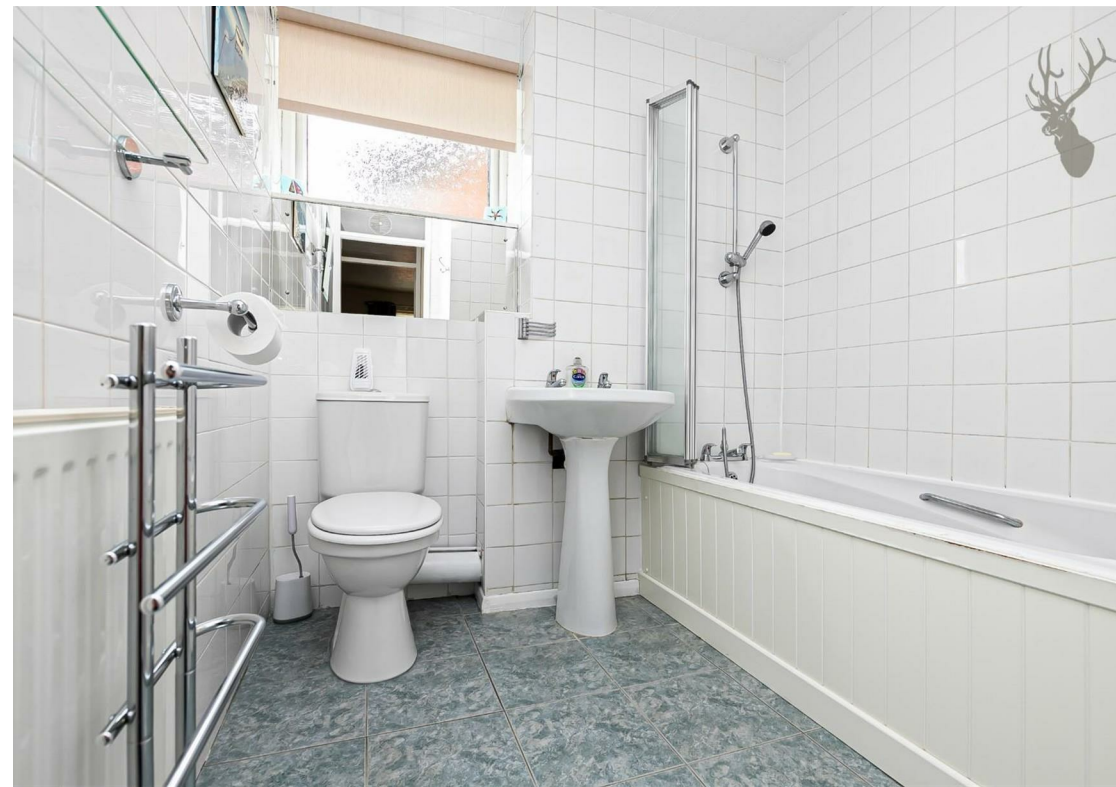
- First Floor Apartment
- Modern Two Bedroom Apartment
- Off Street Parking
- Ideal First Time Purchase
- Village Location
- Close To Local Amenities

Accessed from the peaceful rear courtyard the accommodation comprises: good size living room which is bright and spacious, separate and fully fitted kitchen with sleek units, two double bedrooms and smart bathroom.

Externally, there is off street parking and two generous communal garden spaces providing further outside accommodation for the sunnier days.

Abridge is a beautiful village conveniently located for the nearby towns of Theydon Bois (with central line station), Chigwell and Loughton and also transport links to the M25 and M11. The village offers several pubs and restaurants, coffee bar, convenience store and a primary school.

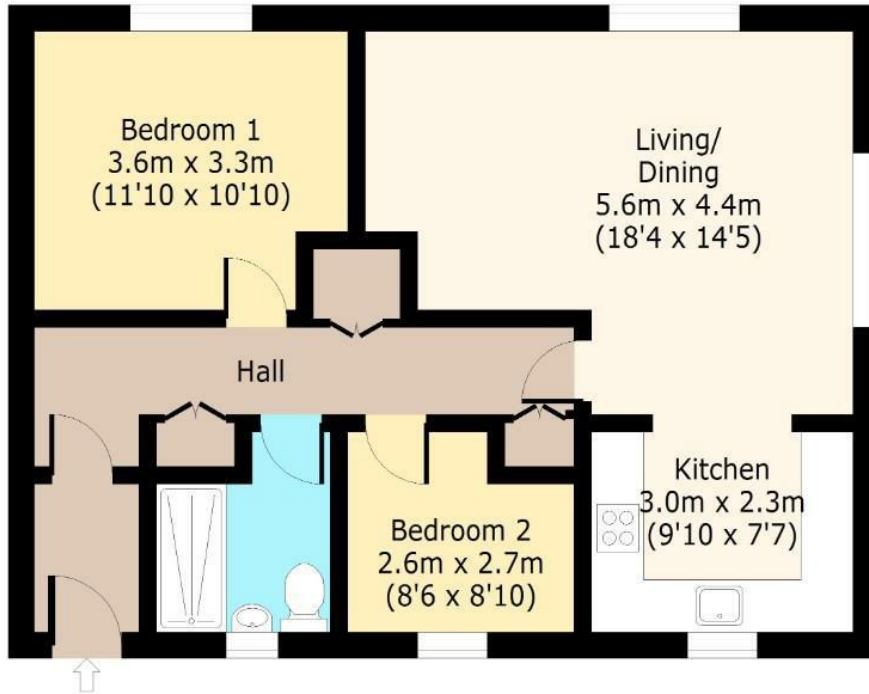




The Chestnuts,

First Floor

Approx. 65 Sq. meters (700 Sq. feet)



Total area: approx. 65 Sq. meters (700 Sq. feet)
For illustration purposes only - not to scale
www.lpaplus.com

IMPORTANT NOTICE - These particulars have been prepared in good faith and they are not intended to constitute part of an offer or contract. We have not performed a structural survey on this property and the services, appliances and specific fittings have not been tested. All photographs, measurements, floor plans and distances referred to are given as a guide and should not be relied upon.

BUTLER & STAG

☎ 01992 667666

🏠 4 Forest Drive, Theydon Bois, Essex, CM16 7EY

✉ theydon@butlerandstag.com

www.butlerandstag.uk